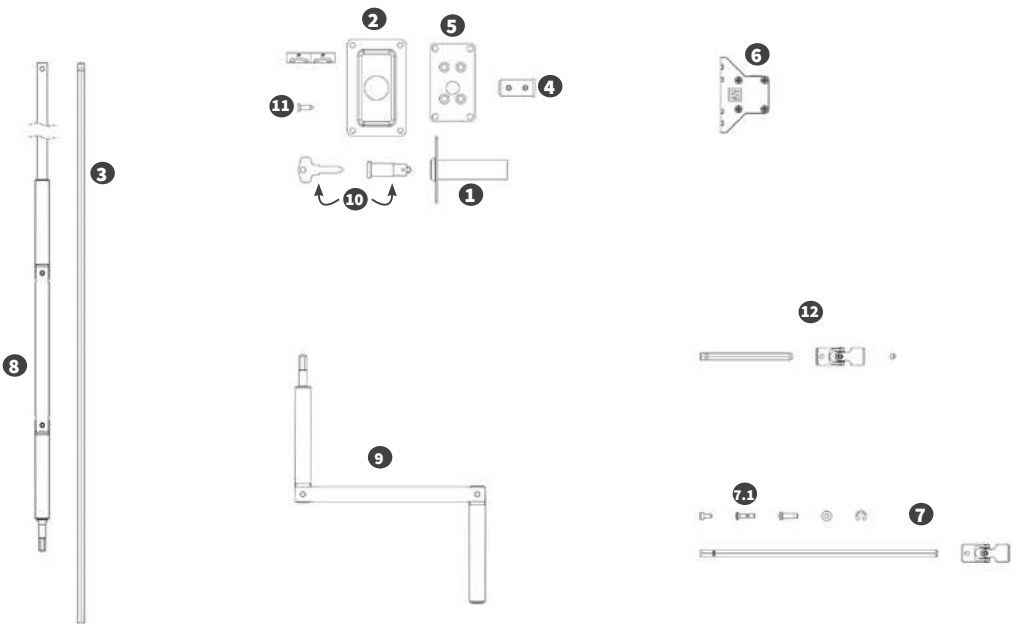
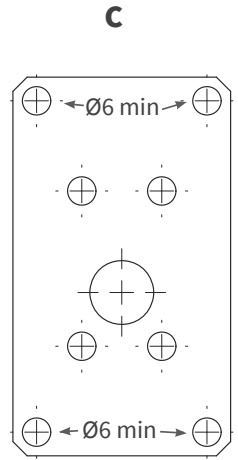
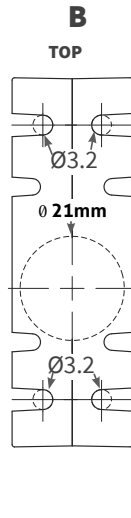
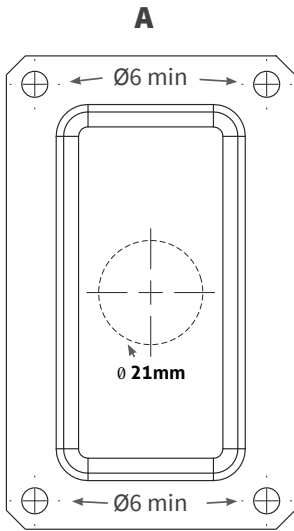




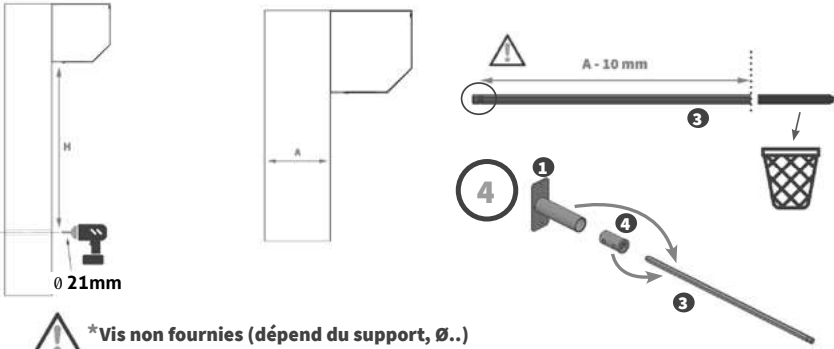
Kit manœuvre secours pour Porte de garage et Volets roulants





3

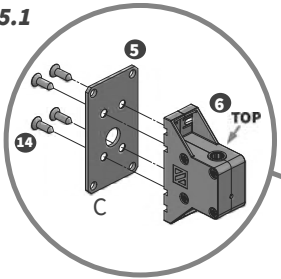
MONTAGE SUR MUR



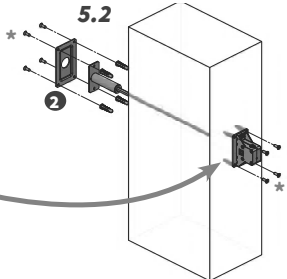
5

*Vis non fournies (dépend du support, Ø..)

5.1

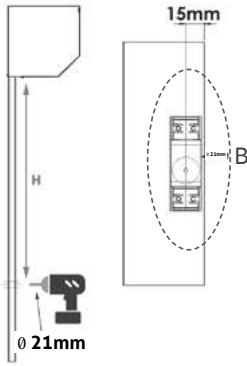


5.2

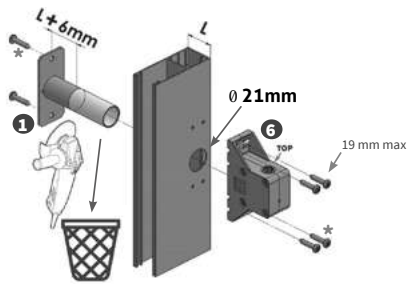


MONTAGE SUR COULISSE

3B

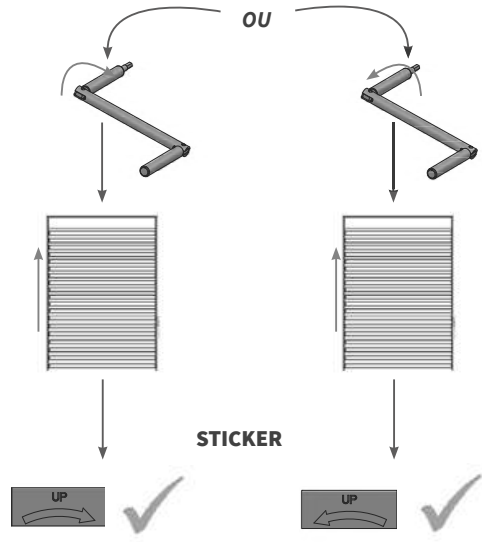
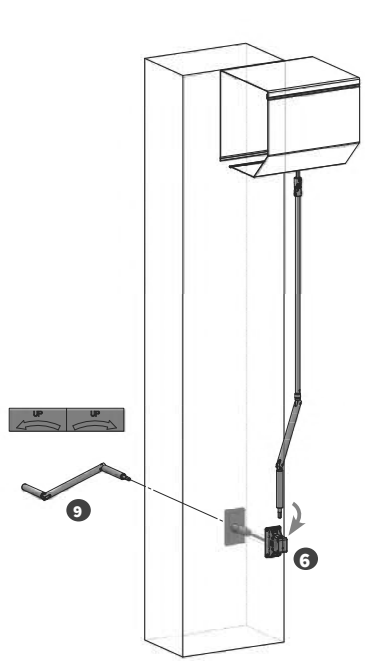


4B

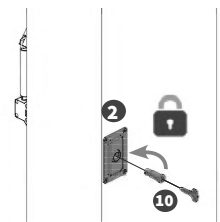


* X6
Vis CBL ST3.9 inox non fournies, préperçage Ø3.2

6



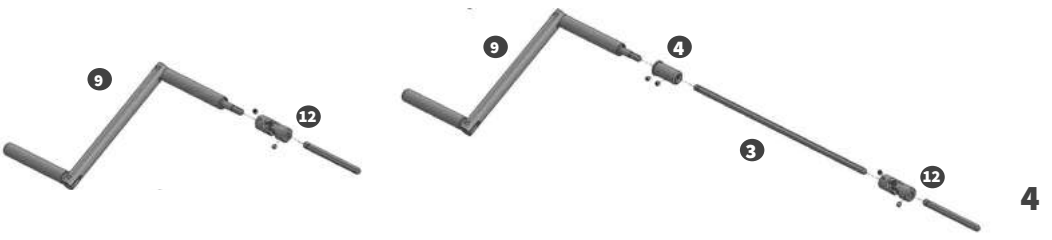
7



En pose sur coulisse, les pièces 2 - 3 - 4 - 5 ne sont pas utilisées.



Si vous souhaitez rallonger la manivelle, vous pouvez utiliser la douille 4 et la tige 6p7 3 afin d'échapper aux murs latéraux.



4